



## Test Report

No. TJTC 0830049-2/CHEM

Date: September 12, 2008

Page 1 of 8

U-TRON(BEIJING)ELECTRONICS CO. LTD.  
EAST 5TH FLOOR, 10 LANG JIA YUAN, JIAN GUO MEN WAI AVENUE, BEIJING, CHINA, 100022

THIS REPORT IS TO SUPERSEDE TEST REPORT NO.TJTC 0830049-1/CHEM, DATE:2008/09/05.

The following sample(s) was/were submitted and identified by/on behalf of the client as: LED STREET LIGHTS FRAME (NO.1: 6800-102, NO.2: 6800-103, NO.3: 6800-201)

SGS Ref No. : 11255601  
Main substance : ALUMINUM  
Part No. : 6800 LIGHTS FRAME  
Supplier : U-TRON(BEIJING)ELECTRONICS CO. LTD.

Sample Receiving Date : August 26, 2008  
Testing Period : August 26 to August 29, 2008


Test Requested : In accordance with the RoHS Directive 2002/95/EC, and its amendment directives

Test method : With reference to IEC 62321/2<sup>nd</sup> CDV (111/95/CDV)  
Procedures for the Determination of Levels of Regulated Substances in  
Electrotechnical Products  
1) Determination of Cadmium by ICP-AES/AAS  
2) Determination of Lead by ICP-AES/AAS  
3) Determination of Mercury by ICP-AES  
4) Determination of Hexavalent Chromium by Spot test / Colorimetric Method  
5) Determination of PBBs and PBDEs by GC/MS

Test Results : Please refer to next pages

Conclusion : The results of submitted samples (item No.1, No.2 and No.3) comply with the RoHS Directive 2002/95/EC and its subsequent.

Signed for and on behalf of  
SGS-CSTC Chemical Laboratory



Lucid Qi  
Manager

This document is issued by the Company under its General Conditions of Service printed overleaf or available on request and accessible at <http://www.sgs.com/termsandconditions.htm>. Attention is drawn to the limitation of liability, indemnification and jurisdiction issues defined therein. Any holder of this document is advised that information contained hereon reflects the Company's findings at the time of its intervention only and within the limits of Client's instructions, if any. The Company's sole responsibility is to its Client and this document does not exonerate parties to a transaction from exercising all their rights and obligations under the transaction documents. Any unauthorized alteration, forgery or falsification of the content or appearance of this document is unlawful and offenders may be prosecuted to the fullest extent of the law. Unless otherwise stated the results shown in this test report refer only to the sample(s) tested. This document cannot be reproduced except in full, without prior approval of the Company.



# Test Report

No. TJTC 0830049-2/CHEM

Date: September 12, 2008

Page 2 of 8

Test results by chemical method (Unit: mg/kg)

Test Item(s):	Method (refer to)	No.1	No.2	MDL	RoHS Limit
Cadmium (Cd)	(1)	n.d.	n.d.	2	100
Lead (Pb)	(2)	28	28	2	1000
Mercury (Hg)	(3)	n.d.	n.d.	2	1000
Hexavalent Chromium (CrVI) by Spot test / boiling water extraction	(4)	Negative	Negative	See Note (4)	#

Test Item(s):	Method (refer to)	No.3	MDL	RoHS Limit
Cadmium (Cd)	(1)	n.d.	2	100
Lead (Pb)	(2)	12	2	1000
Mercury (Hg)	(3)	n.d.	2	1000
Hexavalent Chromium (CrVI) by alkaline extraction	(4)	n.d.	2	1000
<b>Sum of PBBs</b>	(5)	n.d.	-	1000
Monobromobiphenyl		n.d.	5	-
Dibromobiphenyl		n.d.	5	-
Tribromobiphenyl		n.d.	5	-
Tetrabromobiphenyl		n.d.	5	-
Pentabromobiphenyl		n.d.	5	-
Hexabromobiphenyl		n.d.	5	-
Heptabromobiphenyl		n.d.	5	-
Octabromobiphenyl		n.d.	5	-
Nonabromobiphenyl		n.d.	5	-
Decabromobiphenyl		n.d.	5	-
<b>Sum of PBDEs</b>		n.d.	-	1000
Monobromodiphenyl ether		n.d.	5	-
Dibromodiphenyl ether		n.d.	5	-
Tribromodiphenyl ether		n.d.	5	-
Tetrabromodiphenyl ether		n.d.	5	-
Pentabromodiphenyl ether		n.d.	5	-
Hexabromodiphenyl ether		n.d.	5	-
Heptabromodiphenyl ether		n.d.	5	-
Octabromodiphenyl ether		n.d.	5	-
Nonabromodiphenyl ether	n.d.	5	-	
Decabromodiphenyl ether ##	n.d.	5	-	

This document is issued by the Company under its General Conditions of Service printed overleaf or available on request and accessible at <http://www.sgs.com/termsandconditions.htm>. Attention is drawn to the limitation of liability, indemnification and jurisdiction issues defined therein. Any holder of this document is advised that information contained hereon reflects the Company's findings at the time of its intervention only and within the limits of Client's instructions, if any. The Company's sole responsibility is to its Client and this document does not exonerate parties to a transaction from exercising all their rights and obligations under the transaction documents. Any unauthorized alteration, forgery or falsification of the content or appearance of this document is unlawful and offenders may be prosecuted to the fullest extent of the law. Unless otherwise stated the results shown in this test report refer only to the sample(s) tested. This document cannot be reproduced except in full, without prior approval of the Company.



## Test Report

No. TJTC 0830049-2/CHEM

Date: September 12, 2008

Page 3 of 8

### Test Part Description:

No.1: metal matrix with charcoal grey coating (coating excluded)

No.2: silvery metal

No.3: black rubber

Note : (1) mg/kg = ppm

(2) n.d. = Not Detected

(3) MDL = Method Detection Limit

(4) Spot-test:

Negative = Absence of CrVI coating, Positive = Presence of CrVI coating;

(The tested sample should be further verified by boiling-water-extraction method if the spot test result is Negative or cannot be confirmed.)

Boiling-water-extraction:

Negative = Absence of CrVI coating

Positive = Presence of CrVI coating; the detected concentration in boiling-water-extraction solution is equal or greater than 0.02 mg/kg with 50 cm<sup>2</sup> sample surface area.

(5) # = Positive indicates the presence of Hexavalent Chromium on the tested areas.

Negative indicates the absence of CrVI on the tested areas.

(6) ## = The exemption of DecaBDE in polymeric application according 2005/717/EC was overruled by the European Court of Justice by its decision of 01.04.2008. Subsequently DecaBDE will be included in the sum of PBDE after 01.07.2008

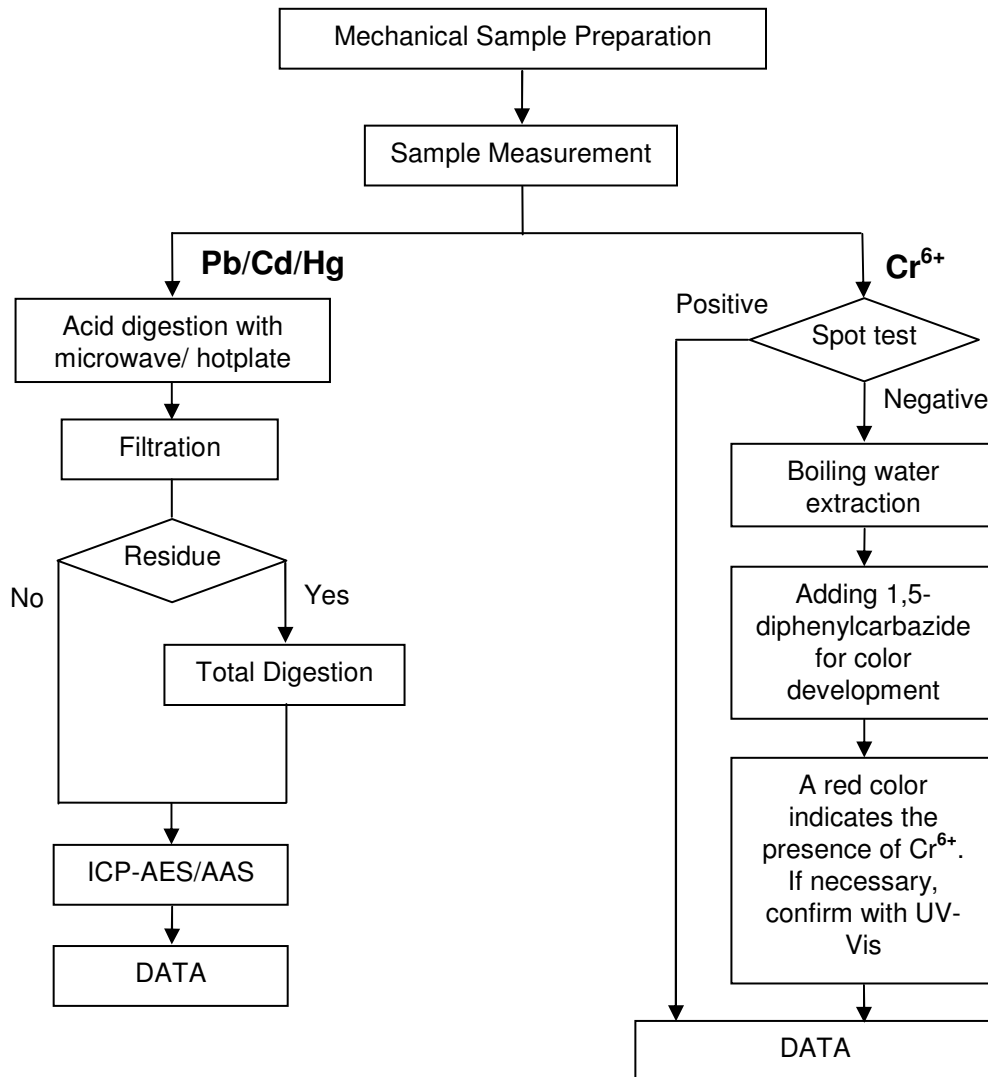
(7) “.” = Not regulated

(8) The maximum permissible limit is quoted from the document 2005/618/EC amending RoHS directive 2002/95/EC

This document is issued by the Company under its General Conditions of Service printed overleaf or available on request and accessible at <http://www.sgs.com/termsandconditions.htm>. Attention is drawn to the limitation of liability, indemnification and jurisdiction issues defined therein. Any holder of this document is advised that information contained hereon reflects the Company's findings at the time of its intervention only and within the limits of Client's instructions, if any. The Company's sole responsibility is to its Client and this document does not exonerate parties to a transaction from exercising all their rights and obligations under the transaction documents. Any unauthorized alteration, forgery or falsification of the content or appearance of this document is unlawful and offenders may be prosecuted to the fullest extent of the law. Unless otherwise stated the results shown in this test report refer only to the sample(s) tested. This document cannot be reproduced except in full, without prior approval of the Company.

**Pb/Cd/Hg/Cr<sup>6+</sup> Testing Flow Chart (Sample No.1, No.2)**

- 1) Operator : Amy Wang
- 2) Section Chief : Cindy Yin

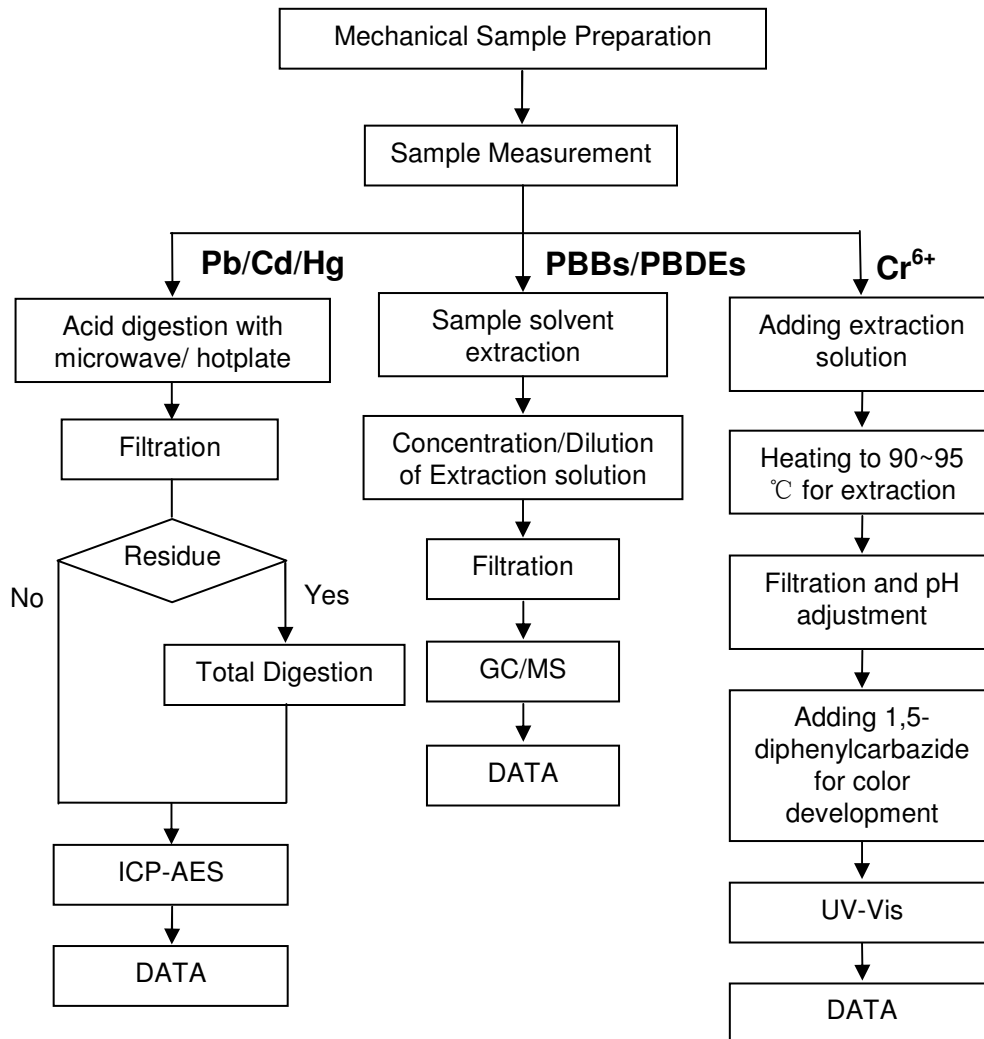


This document is issued by the Company under its General Conditions of Service printed overleaf or available on request and accessible at <http://www.sgs.com/termsandconditions.htm>. Attention is drawn to the limitation of liability, indemnification and jurisdiction issues defined therein. Any holder of this document is advised that information contained hereon reflects the Company's findings at the time of its intervention only and within the limits of Client's instructions, if any. The Company's sole responsibility is to its Client and this document does not exonerate parties to a transaction from exercising all their rights and obligations under the transaction documents. Any unauthorized alteration, forgery or falsification of the content or appearance of this document is unlawful and offenders may be prosecuted to the fullest extent of the law. Unless otherwise stated the results shown in this test report refer only to the sample(s) tested. This document cannot be reproduced except in full, without prior approval of the Company.



**Pb/Cd/Hg/Cr<sup>6+</sup>/PBBs&PBDEs Testing Flow Chart (Sample No.3)**

- 1) Operator : Amy Wang
- 2) Section Chief : Cindy Yin



This document is issued by the Company under its General Conditions of Service printed overleaf or available on request and accessible at <http://www.sgs.com/termsandconditions.htm>. Attention is drawn to the limitation of liability, indemnification and jurisdiction issues defined therein. Any holder of this document is advised that information contained hereon reflects the Company's findings at the time of its intervention only and within the limits of Client's instructions, if any. The Company's sole responsibility is to its Client and this document does not exonerate parties to a transaction from exercising all their rights and obligations under the transaction documents. Any unauthorized alteration, forgery or falsification of the content or appearance of this document is unlawful and offenders may be prosecuted to the fullest extent of the law. Unless otherwise stated the results shown in this test report refer only to the sample(s) tested. This document cannot be reproduced except in full, without prior approval of the Company.



Sample photo:



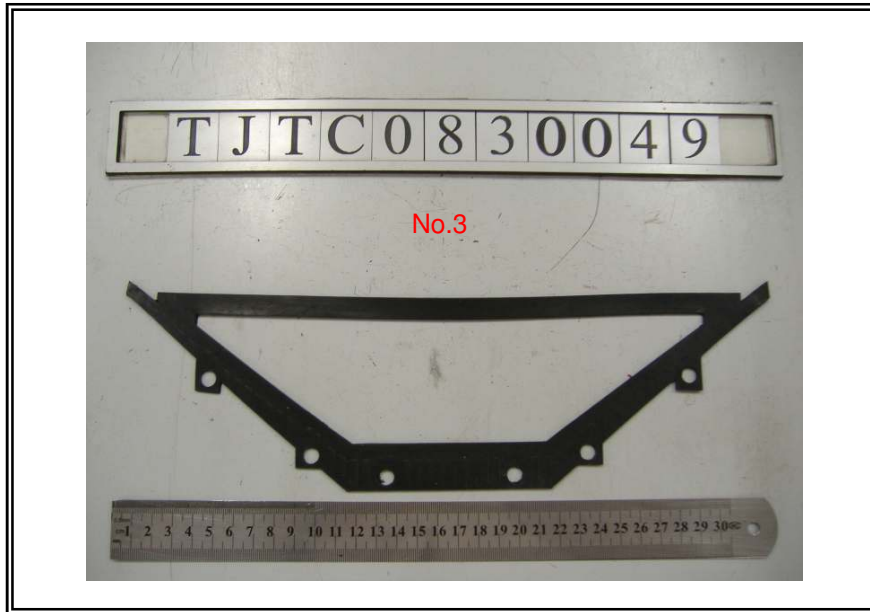
This document is issued by the Company under its General Conditions of Service printed overleaf or available on request and accessible at <http://www.sgs.com/terms-and-conditions.htm>. Attention is drawn to the limitation of liability, indemnification and jurisdiction issues defined therein. Any holder of this document is advised that information contained hereon reflects the Company's findings at the time of its intervention only and within the limits of Client's instructions, if any. The Company's sole responsibility is to its Client and this document does not exonerate parties to a transaction from exercising all their rights and obligations under the transaction documents. Any unauthorized alteration, forgery or falsification of the content or appearance of this document is unlawful and offenders may be prosecuted to the fullest extent of the law. Unless otherwise stated, the results shown in this test report refer only to the sample(s) tested. This document cannot be reproduced except in full, without prior approval of the Company.





This document is issued by the Company under its General Conditions of Service printed overleaf or available on request and accessible at <http://www.sgs.com/termsandconditions.htm>. Attention is drawn to the limitation of liability, indemnification and jurisdiction issues defined therein. Any holder of this document is advised that information contained hereon reflects the Company's findings at the time of its intervention only and within the limits of Client's instructions, if any. The Company's sole responsibility is to its Client and this document does not exonerate parties to a transaction from exercising all their rights and obligations under the transaction documents. Any unauthorized alteration, forgery or falsification of the content or appearance of this document is unlawful and offenders may be prosecuted to the fullest extent of the law. Unless otherwise stated, the results shown in this test report refer only to the sample(s) tested. This document cannot be reproduced except in full, without prior approval of the Company.





SGS authenticate the photo on original report only

\*\*\* End of Report \*\*\*

This document is issued by the Company under its General Conditions of Service printed overleaf or available on request and accessible at <http://www.sgs.com/termsandconditions.htm>. Attention is drawn to the limitation of liability, indemnification and jurisdiction issues defined therein. Any holder of this document is advised that information contained hereon reflects the Company's findings at the time of its intervention only and within the limits of Client's instructions, if any. The Company's sole responsibility is to its Client and this document does not exonerate parties to a transaction from exercising all their rights and obligations under the transaction documents. Any unauthorized alteration, forgery or falsification of the content or appearance of this document is unlawful and offenders may be prosecuted to the fullest extent of the law. Unless otherwise stated, the results shown in this test report refer only to the sample(s) tested. This document cannot be reproduced except in full, without prior approval of the Company.