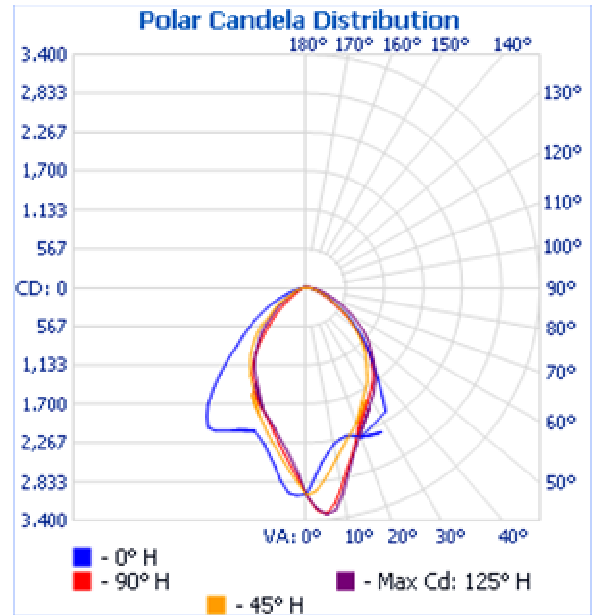


Photometrics Pro

Luminaire Photometric Report

- [Evaluation Version]

Filename: U-Tron Lucas III 90
Manufacturer: U-Tron
Luminaire: Lucas III 90
Lamp: Lucas III 90
Lamp Cat: Street Light
Lamp Output: 1 lamp(s), rated Lumens/lamp: 6500
Max Candela: 3,322.7 at Horizontal: 125°, Vertical: 5°
Input Wattage: 120
Luminous Opening: Ellipse (L: -0.45m, W: -0.33m)
Test Date: 2009-09-29
Test Lab: U-Tron (Beijing) Electronics Co., Ltd.
Photometry : Type B
CIE Class: Direct



Roadway Summary

Cutoff Classification:	CUTOFF	
Distribution:	TYPE I, VERY SHORT	
Max Cd, 90 Deg Vert:	44.1	
Max Cd, 80 to <90 Deg:	157.6	
	Lumens	% Lamp
Downward Street Side:	2,288.9	35.2%
Downward House Side:	2,663.9	41%
Downward Total:	4,952.8	76.2%
Upward Street Side:	0	0%
Upward House Side:	0	0%
Upward Total:	0	0%
Total Lumens:	4,952.8	76.2%

Zonal Lumen Summary

Zone	Lumens	% Lamp	% Luminaire
0-30	1,817.6	28%	36.8%
0-40	2,853.6	43.9%	57.8%
0-60	4,400.0	67.7%	89%
60-90	541.1	8.3%	11%
0-90	4,941.1	76%	100%
90-180	0	0%	0%
0-180	4,941.1	76%	100%

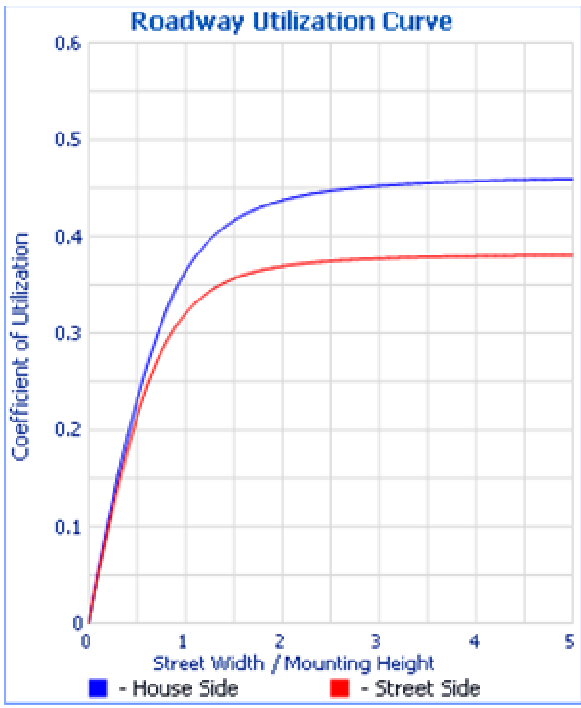
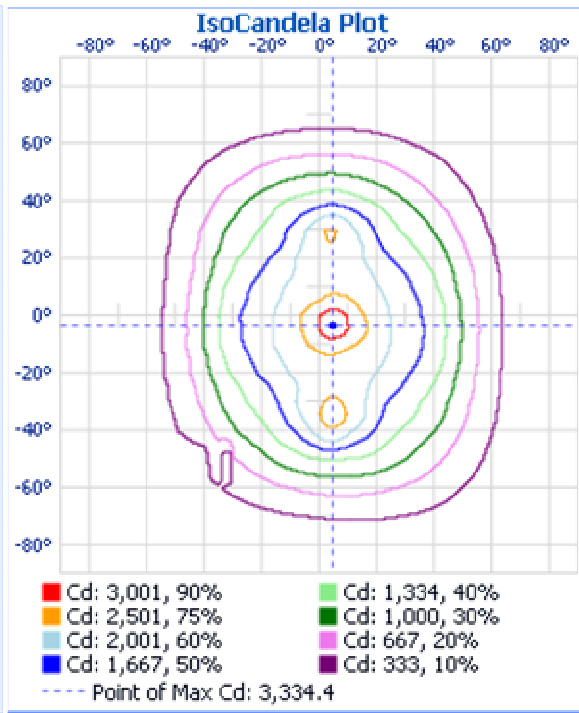
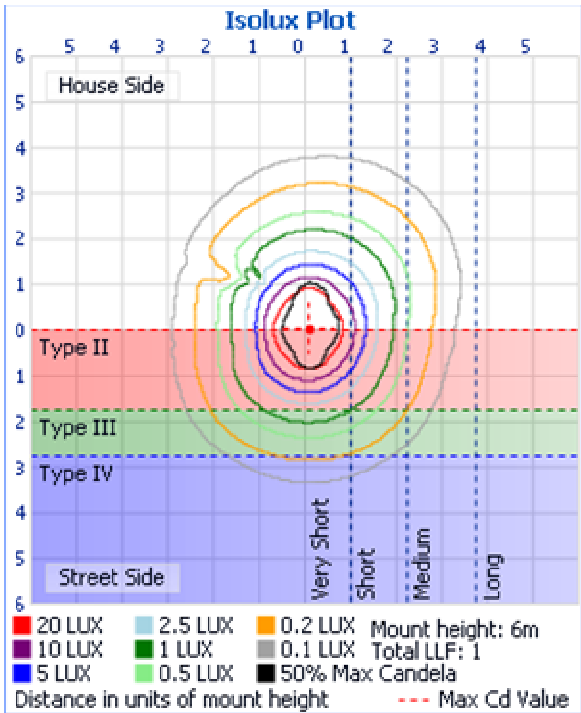
Efficiency Total: 76%

Flood Summary

	Efficiency	Lumens	Horizontal Spread	Vertical Spread
Field (10%):	71.3%	4,634.0	118.4	136.3
Beam (50%):	36.1%	2,347.7	63.7	85.6
Total:	76.1%	4,949.5		

Lumens Per Zone

Zone	Lumens	% Total	Zone	Lumens	% Total
0-10	261.6	5.3%	90-100	0	0%
10-20	644.0	13.0%	100-110	0	0%
20-30	911.9	18.5%	110-120	0	0%
30-40	1,036.1	21.0%	120-130	0	0%
40-50	915.2	18.5%	130-140	0	0%
50-60	631.2	12.8%	140-150	0	0%
60-70	346.4	7.0%	150-160	0	0%
70-80	154.5	3.1%	160-170	0	0%
80-90	40.1	0.8%	170-180	0	0%



Illuminance at a Distance

Distance	Center Beam LUX	Beam Width
1.0m	3,016.33 LUX	1.9m x 1.2m
2.0m	754.08 LUX	3.7m x 2.5m
3.0m	335.15 LUX	5.6m x 3.7m
4.0m	188.52 LUX	7.4m x 5.0m
5.0m	120.65 LUX	9.3m x 6.2m
6.0m	83.79 LUX	11.1m x 7.5m

Vert. Spread: 85.6° Horiz. Spread: 63.7°

Photometrics Pro - Evaluation Version

Photometrics Pro - Evaluation Version

Luminaire Report Summary

IESNA:LM-63-2002
 [TEST]
 [TESTLAB] U-Tron (Beijing) Electronics Co., Ltd.
 [TESTDATE] 2009-09-29
 [ISSUEDATE] 2009-09-29 10:46:36
 [LAMPPOSITION] 0,0
 [OTHER] EVERFINE GO1900_V2 SYSTEM
 [MANUFAC] U-Tron
 [LUMINAIRE] Lucas III 90
 [LAMP] Lucas III 90
 [LAMP] Lucas III 90
 FILE: CANDELA MULTIPLIER: 1
 FILE: VERTICAL ANGLES: 91, HORIZONTAL ANGLES: 181
 FILE: COORDINATE SYSTEM: TYPE B
 FILE: UNIT OF MEASURE: METRIC

FILE: BALLAST FACTOR: 1

Photometrics Pro 1.3.9 - (Evaluation Version) copyright 2003-2009 by jSolutions, Inc.
Reported data calculated from manufacturer's data file, based on IES recommended methods.